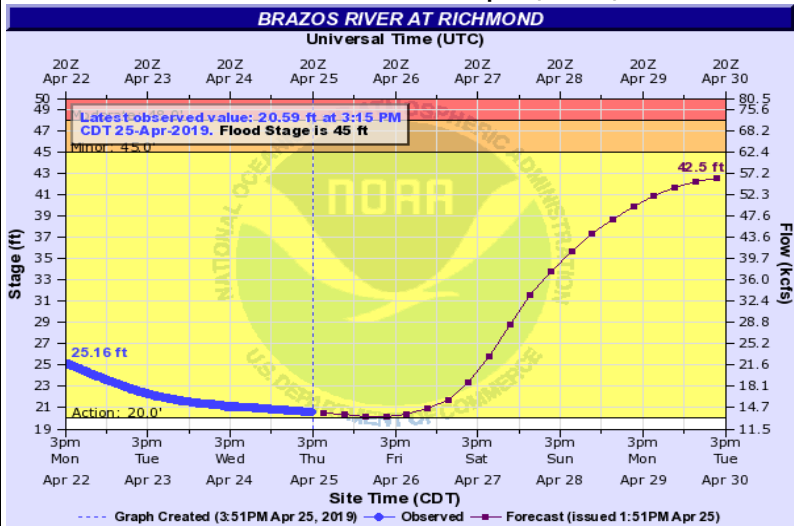


### Brazos River in Action Stage / Will Remain in Action Stage through the Forecast Window

Latest Brazos River Forecast Graphic (WGRFC)



RMOTZ(plotting HGIRG) "Gage 0" Datum: 27.02' | Observations courtesy of US Geological Survey

Current forecast includes the precipitation received plus the precipitation forecasted over the next 24 hours.

Flood Categories at Richmond		Historical Period Mean: 15.18 (1998-2018)			
Major Flood Stage	50	Historical Period Peak:	47.09 (1998-2018)		
Moderate Flood Stage	48	Previous 7 Days	Historical Peaks (Top 3)		
Flood Stage	45	20.59	Current Reading	High:	61.2 (12/10/1913)
Action Stage	20	26.75	Peak Reading		55.19 (09/01/2017)
Low Stage	0	23.76	Average Reading		54.74 (06/02/2016)

### Brazos River Status

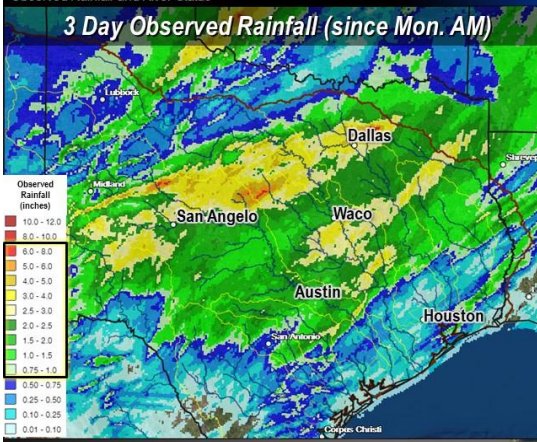
Location	Current Levels				
	Datum Adj.	Cur. Stage	Cur. Category	Forecast	Time to Peak
Navasota River Near Normangee	245.00	13.46	Action Stage	17.80	04/29 @ 1 AM
Bryan (Brazos River)	189.30	29.55	Below Action	38.20	04/27 @ 1 AM
Hempstead (Brazos River)	107.90	22.96	Below Action	46.70	04/28 @ 7 AM
Mill Creek Near Bellville	122.82	3.16	Below Action	No Forecast	Level
San Felipe (Brazos River)	0.00	98.54	Below Action	118.10	04/29 @ 7 AM
Richmond (Brazos River)	27.02	20.59	Action Stage	42.50	04/30 @ 1 PM*
Rosharon (Brazos River)	0.01	20.44	Below Action	No Forecast	Falling*

\*Forecasts Shown is at end of Forecast Window and may not actually represent the peak.

### National Weather Service - WGRFC Rainfall Status

#### Heavy Rain Yields New River Flooding

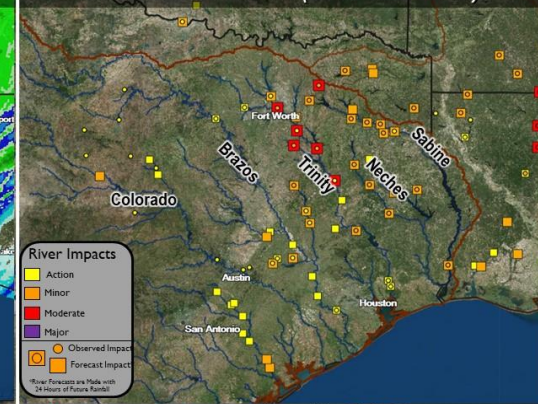
Observed Rainfall and River Status



#### West Gulf River Forecast Center

Issued April 25, 2019 8:50 AM CT

#### Current River Status (as of Thurs. AM)



- Widespread 1-3+'' of rain fell across a large portion of TX this week
- Parts of West, Central, and North Texas observed over 4'' of rain with isolated amounts in excess of 6 inches!
- Moderate river flooding for portions of the Trinity River
- Minor river flooding for portions of the Sulphur, Sabine, Neches, Brazos, Colorado, and Guadalupe Rivers